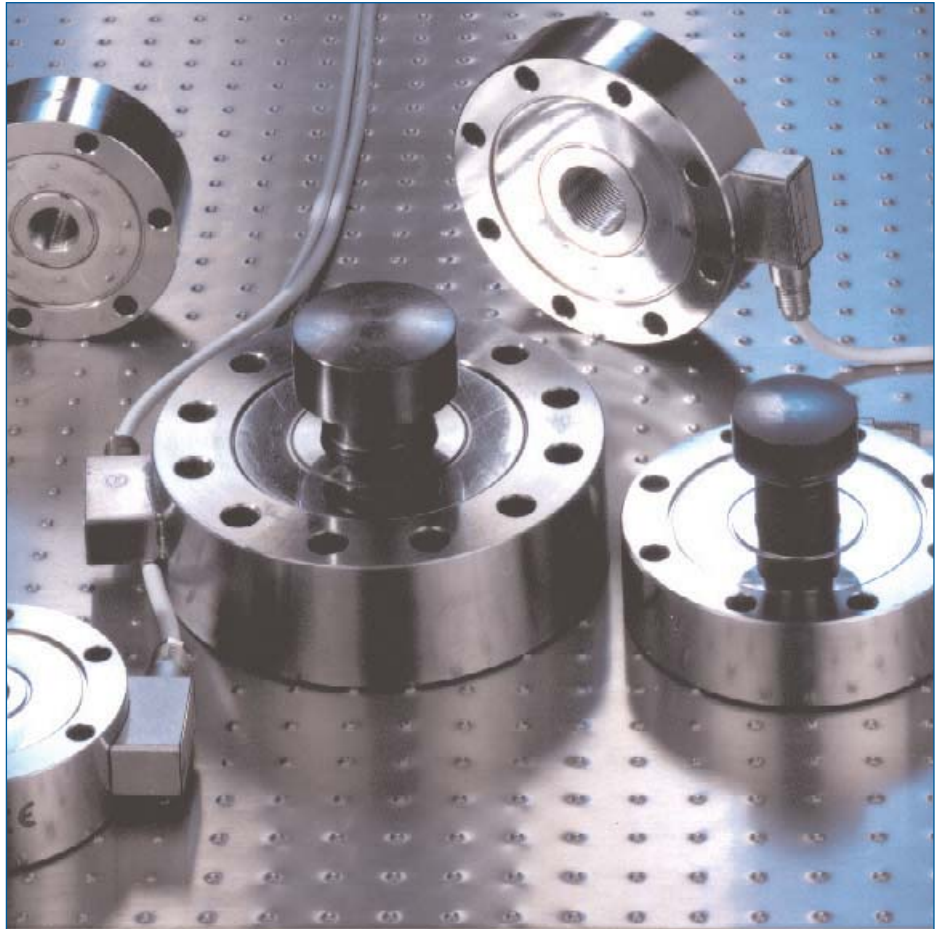


**Electric  
Load Cells  
Model 922**

**Reliable**



testing equipment for quality management

**ERICHSEN**

**Simple**

**Fast**

**Precise**

## General

Electric load cells made by ERICHSEN reflect state of the art sensor technology. At the same time they are easy to use and capable of meeting a wide range of customer requirements. The measuring procedure is based on the elongation of high quality foil strain gauges.

## Application

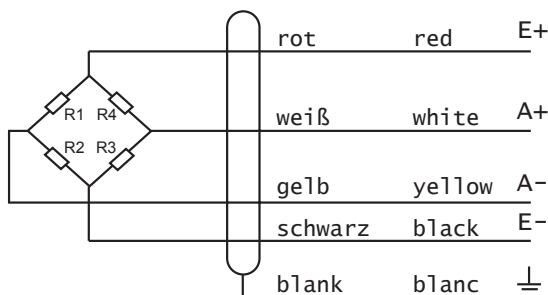
These force measuring devices are suitable for universal applications, namely wherever tensile and pressure forces need to be measured with a high degree of accuracy, e.g. in materials testing (Erichsen Tensile Testing Machines **UNIMAT®** and **UNIMAT® + UNICON-TROL®**), in reference measuring equipment and in research and development. For industrial purposes too, these force transducers are ideal in the fields of automation, controlling press-in processes and in joining technology.

An extensive accessories program is available. A connection to the Measuring and Display Instruments **975 AP**, **980 AP** and **PHYSIMETER 906 MC** is also possible by means of an adapter plug.

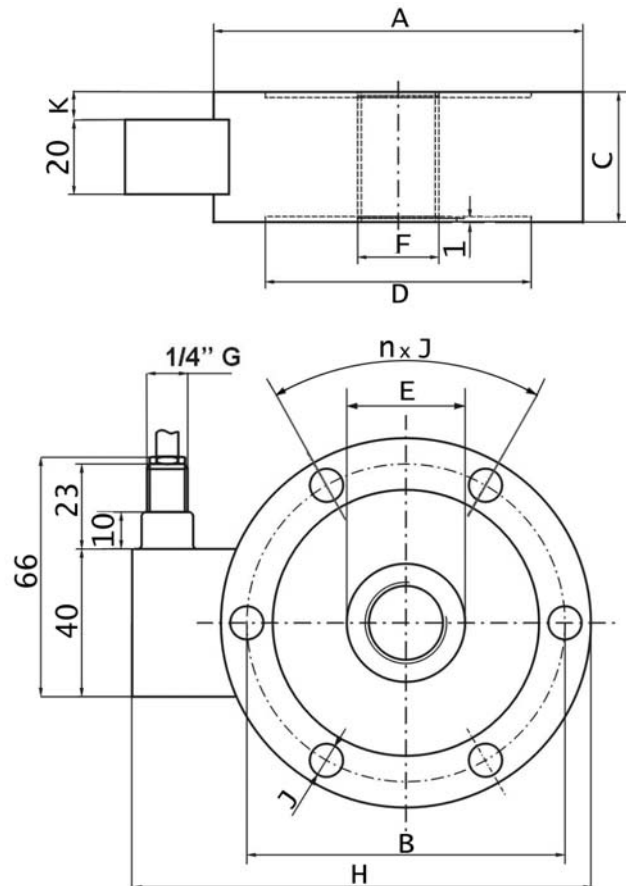
## Technical Data

Parameter:	2 mV/V
Accuracy acc. to ISO 376 and EN 10002-3:	Class 1
Reference temperature:	21 °C
Nominal temperature range:	-10/+50 °C
Storage temperature range:	-50/+80 °C
Bridge resistance:	700 Ω
Insulating resistance:	> 5 G Ω
Nominal range of supply voltage:	5 - 10 V
Breaking load related to nominal force:	> 200 %
Max. allowable dynamic load (oscillation amplitude according to DIN 50100) related to nominal force:	< 70 %
Protection class:	IP 67
Sensor material:	Special steel

## Terminal connecting plan



## Load Cells 922



Dimensions in mm

Nominal Force	A	B	C	D	E	F	n x J	H	K	f <sub>n</sub> kHz
5 kN	100	86	35	72	32	M20x1.5	6xØ9	124	7,5	2.3
10 kN										2.3
25 kN										4.8
50 kN	127	110	35	92	47	M30x2	8xØ10,5	152	7,5	3.8
100 kN										5.8
200 kN										5.7
300 kN	165	138	50	108	62	M42x3	12xØ17	190	15	7.3
500 kN										9.8
1000 kN	230	185	80	147	96	M60x3	12xØ25	254	30	18.2

## Order Information

Order No.	Product Description
	<b>Electric Load Cells 922</b> to measure tensile and pressure forces, open cable ends, cable length approx. 5m
0589.01.32	922 - 5 kN
0589.02.32	922 - 10 kN
0589.10.32	922 - 25 kN
0589.04.32	922 - 50 kN
0589.05.32	922 - 100 kN
0589.06.32	922 - 200 kN
0589.07.32	922 - 300 kN
0589.08.32	922 - 500 kN
0589.09.32	922 - 1000 kN

Subject to technical modification.  
TBE 922 - XI/2003

**Accessories for  
Electric Load Cells  
Model 922**

**Reliable**

testing equipment for quality management

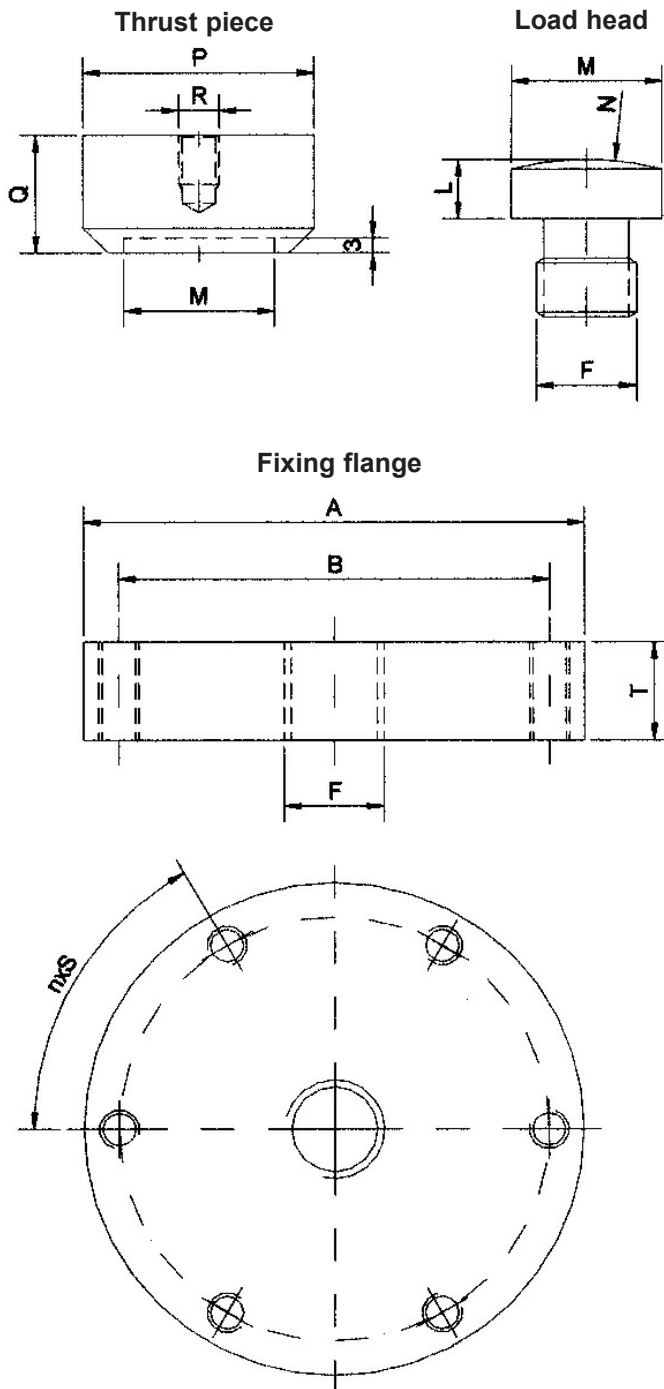
**ERICHSEN**

**Simple**

**Fast**

**Precise**

## Accessories for Electric Load Cells 922



Dimensions in mm

Nominal Force	A	B	F	L	M	N	P	Q	R	n x S	T
5 kN											
10 kN	100	86	M20x1.5	12	30	R60	46	24	M8x10	6xM8	35
25 kN											
50 kN	127	110	M30x2	18	45	R160	75	40	M10x15	8xM10	35
100 kN											
200 kN											
300 kN	165	138	M42x3	27	60	R300	90	50	M10x15	12xM16	45
500 kN											
1000 kN	230	185	M60x3	40	90	R400	130	65	M10x15	12xM24	65

Accessories / Load Cells 922	
Order No.	Product Description
	for Load Cells 922 (5 - 25 kN)
0604.01.32	Load head
0605.01.32	Thrust piece
0606.01.32	Fixing flange
	for Load Cells 922 (50 - 100 kN)
0607.01.32	Load head
0608.01.32	Thrust piece
0609.01.32	Fixing flange
	for Load Cells 922 (200 - 500 kN)
0610.01.32	Load head
0611.01.32	Thrust piece
0612.01.32	Fixing flange
	for Load Cells 922 (1000 kN)
0613.01.32	Load head
0614.01.32	Thrust piece
0615.01.32	Fixing flange

Accessories / Measuring and Display Instruments	
Order No.	Product Description
0187.01.31	Multi Measuring Device <b>PHYSIMETER® 906 MC</b> Display Instrument with Datalogger and statistic functions, incl. charging unit
0629.01.32	<b>Extra charge</b> for providing the load cell with a special plug for connection to the <b>PHYSIMETER® 906 MC</b> , including calibration
0237.01.31	Display instrument, <b>Modell 975 AP</b> for force measurement in connection with DMS force transducers,
0237.02.31	Display instrument, <b>Modell 980 AP</b> for force measurement in connection with DMS force transducers, with RS 232-interface, analogue and limit value output, optimization of characteristic curves, max. scanning rate of 250 Hz, incl. integrated mains supply
0630.01.32	<b>Extra charge</b> for providing the load cell with a special plug for connection to the Display Instruments <b>975 AP/980 AP</b> , including calibration on the instrument
0631.01.32	<b>Extra charge</b> for providing the load cell with a special plug for connection to the control and evaluation unit <b>UNICON TROL®</b> , without calibration on site

Subject to technical modification.  
TBE 922/Accessories - XI/2003