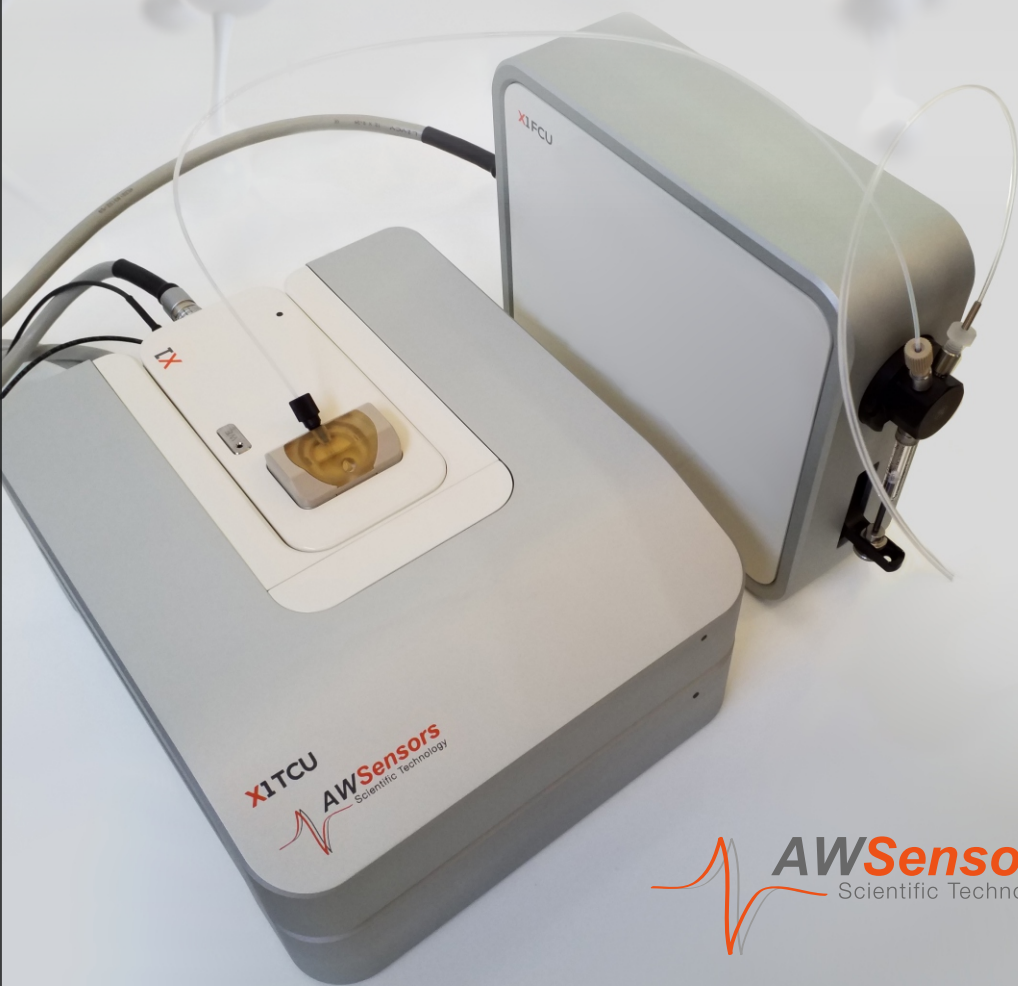
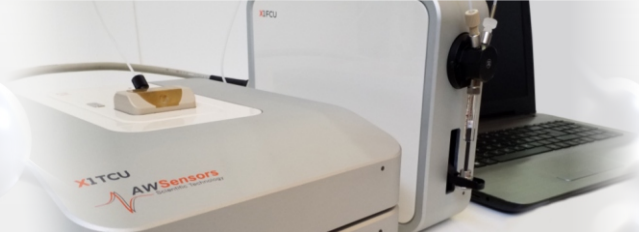


THE fastest and
most sensitive QCMD
instrument on the market

X1

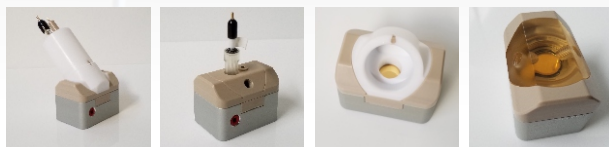


 **AW Sensors**
Scientific Technology



Main features

- Multiple overtones measurements (up to the 13th overtone for a 5 MHz sensor)
- Integrated potentiostat control for electrochemical measurements
- Space saving and light weight design
- Modularity to fit various budgets and applications
- Classical, HFF and LOVE-SAW sensors
- Accessories



General operation specifications

<i>Number of cell units (channels)</i>	1
<i>Type of sensors</i>	QCM, AWS HFF - QCM, AWS Love - SAW
<i>Number of overtones</i>	Up to 7 (fundamental + 6 overtones)
<i>Operation frequency range</i>	4 MHz – 160 MHz
<i>Max. Frequency resolution</i>	0.1 Hz
<i>Frequency accuracy</i>	± 0.5 Hz
<i>Temperature control range</i>	15 °C – 45 °C
<i>Temperature stability</i>	± 0.05 °C
<i>Maximum time resolution</i>	250 sps
<i>Normal mass sensitivity in air</i>	8 pg/cm ²
<i>Normal dissipation sensitivity in air</i>	1.71x10 ⁻¹⁰
<i>Normal mass sensitivity in liquid</i>	0.6 ng/cm ²
<i>Normal dissipation sensitivity in liquid</i>	3.5x10 ⁻⁸
<i>Dimensions, (H x W x D) / Weight</i>	150 x 220 x 260 mm (stacked system) / < 8 Kg

Advanced Wave Sensors

Parque Empresarial Táctica
C/ Algepser 24-1 · 46988 Paterna (Valencia) Spain
Phone: +34 961336899 · www.awsensors.com